

Rogerstone Primary School

Monday 9th February 2026

Newsletter



This Week's Information

Dear Parents and Carers,

Please find some information for upcoming events:

Welsh Phrase of The Month – Ble rwyf ti'n byw? – Where do you live?

Responses

Rec/yr 1 - Dw i'n byw yn y

Yrs 2-4 - Dw i'n byw yn T Du/ yng Nhasnewydd, De Cymru.

Dw i'n byw gyda

yrs 5/6 - Dw i'n byw yng nghasnewydd, De Cymru gyda o'r enw

Dw i'n byw mewn fflat ty terras etc



Attendance & Punctuality- Please ensure that we are arriving to school on time and letting office know if your child is absent for any reason by 9am when the registers close. You can let the office know by phone call or email: absence@rogerstoneprimary.com

Reading & Learning at Home- Home learning will be uploaded onto the school website under the class folders every fortnight. Our home learning will have a resilience and life skills theme. We also encourage children to keep reading regularly and enjoy learning through play.

Dates for the Diary – Please keep an eye on every newsletter as we will update the 'Dates for the Diary' section when we have any new and exciting information. We have put a lot of dates and events that are taking place in school for this term.

INSET DAY – INSET Day is this Friday 13th February. **School will be closed to pupils on this day.**

After School Clubs – Clubs will run on Tuesday 27.01.26, 03.02.26, 10.02.26, 24.02.26, 03.03.26, 10.03.26.

Parent Forums – We have a parent forum planned for the Spring Term.

Parents are invited into school on Tuesday 3rd March 9-10am which will be on communication.

Parent Information Sessions –

Tuesday 10th February – 9-10am – Helping your child with writing – ***This is this week, please join us!***

Friday 27th March – 9-10am – Helping your child with maths

Parent Forums and Information Sessions – These sessions have been arranged for all parents to attend should they wish. They will be planned around current themes within the school but they will also give you ideas and ways to support your children.

Kind regards,

Dean Taylor

Executive Headteacher

Mairi Dunn

Head of School

Danielle John

Acting Assistant Headteacher



IMPORTANT REMINDER - Early Collections

Dear Parents/Carers,

Early Collection

I cannot stress the importance of this letter – please take time to read it.

There was a significant increase in the numbers of children being collected early last term. This does cause significant disruption to the child being collected and the other children in the class as the teacher has to stop teaching to dismiss the child being collected.

There were 337 early collections last term. This is an average of 5 a day. We saw as many as 20 on a single day. Numbers increase on Thursdays, Fridays, and days when it is raining.

I understand that children will have medical appointments they need to attend (a majority do seem to be on a Friday), but if that is the case, I have previously asked that they be collected before 2.30pm so as to avoid the busyness of the foyer towards the end of the day when our LRB children are being dismissed.

Our security and the safety of our children is compromised when office staff have to leave their desks to collect children from the classrooms while the front doors are open for staff to escort LRB children to their taxis.

In the interest of pupil safety and continuity of teaching and learning, **please collect your child from their classroom doors at 3.20pm when school finishes.**

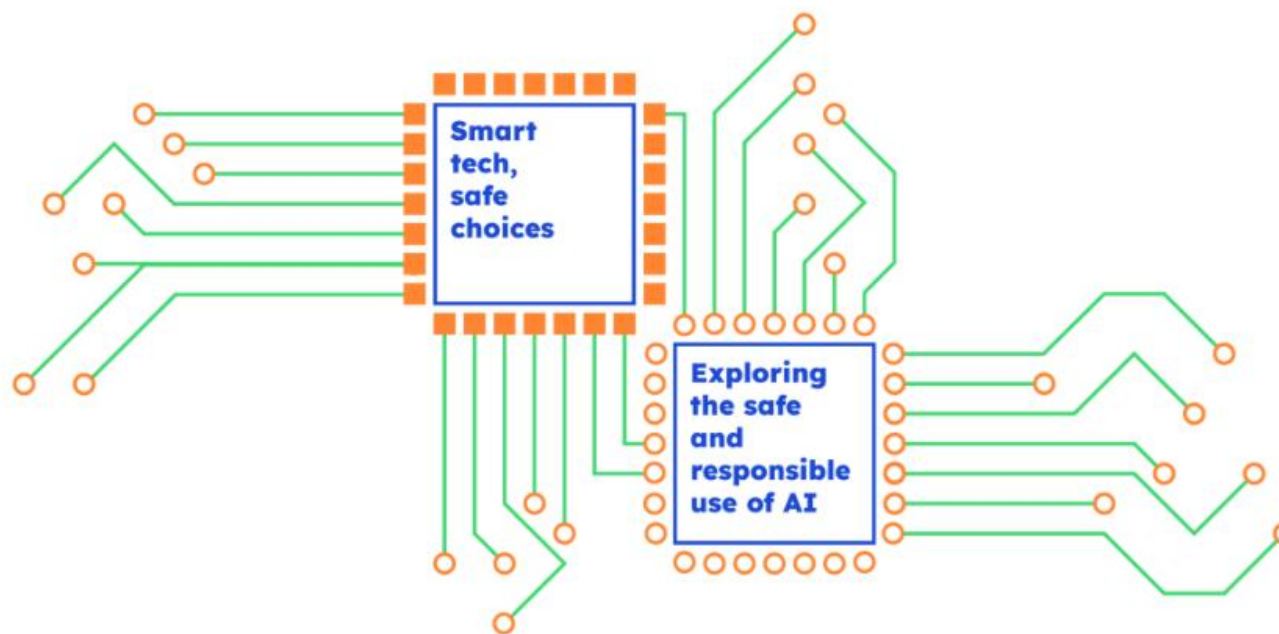
I will be contacting individuals who are regularly collecting early.

Your cooperation in this matter is greatly appreciated. Please pass this message onto anyone who collects your child from school.

Thank you.



Safer Internet Day!



Safer Internet Day – Tuesday 10th February

Find out more information on:

<https://saferinternet.org.uk/safer-internet-day/safer-internet-day-2026>





Little Leaders Cymru
presents



SENIOR SHOW CHOIR

FIRST SESSION FREE

Tuesdays 5pm-6pm
Dolman Theatre, Newport

Ages 9-16

Message us or scan QR code to book a place!



Little Leaders Cymru



@little_leaders_cymru

Website: <https://sites.google.com/view/littleleaderscymru>

Information



Children's Mental Health Week

The theme this year is - "This is My Place".

This encourages creating inclusive, safe environments where children and young people feel they belong, which helps them manage stress and feel connected.



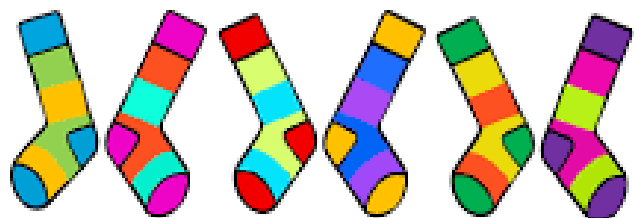
Please find out more information:

<https://www.place2be.org.uk/about-us/childrens-mental-health-week/>

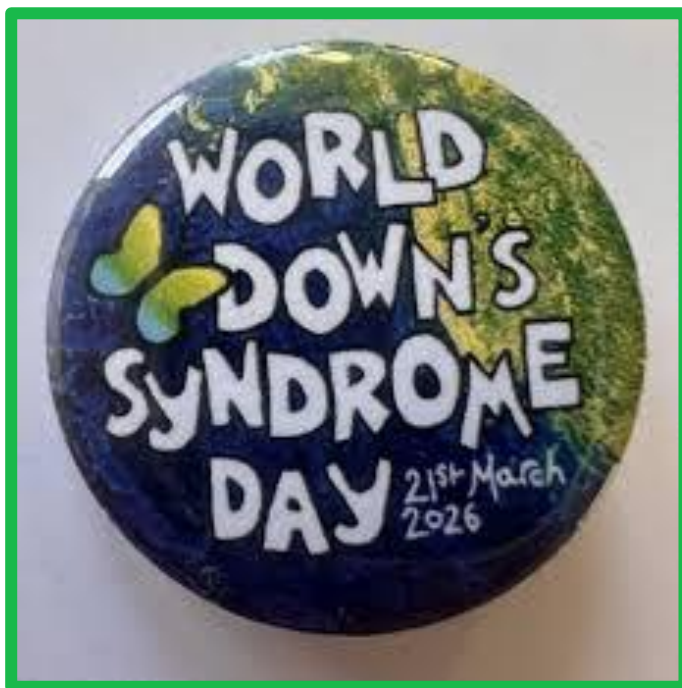
Children's Mental Health Week – 9th-15th February



World Down Syndrome Day!



World Down Syndrome Day
••• **March 21** •••



World Down Syndrome Day is a chance to celebrate people with Down syndrome for who they are – not as a diagnosis – but as valued members of our families, schools and communities.

Saturday 21st March 2026

For more information on how you can get involved and support this fantastic awareness day please see this website:

<https://downsyndromeuk.co.uk/world-down-syndrome-day/>



Bikes at the end of the day:

Reminder to Parents and Carers:

To help keep all children safe, please be reminded that bikes and scooters should not be used on the Foundation Phase yard at the end of the school day.

In addition, children should not be using the play equipment on the Key Stage 2 yard once the school day has finished.

We kindly ask that parents and carers support us by supervising their children closely during pick-up times and helping them follow these expectations.

Thank you for your continued cooperation in ensuring a safe environment for everyone.



Crossings and Safety

For the safety of all our children, we kindly ask parents and pupils to use the designated pathways and crossings when moving around and entering or leaving the school site.

These routes are carefully planned to reduce risk and help manage the flow of people safely at busy times. By following the marked paths and crossings, you are helping us keep everyone safe and setting a positive example of road and site safety for all children.

Thank you for your support and cooperation.



**Please use
pedestrian
walkways**



Mobile Phones

Please share this information with your child:

Reminder:

Mobile phones should not be used on the school site. This includes before school, during the school day, and at the end of the day while you are still on school grounds. Phones should stay switched off and safely put away.

You may only use your mobile phone once you have left the school gates.

Thank you for helping to keep our school a safe and focused place for everyone.



**NO
MOBILE
PHONES**



Dates For The Diary

<u>Date</u>	<u>Time</u>	<u>Event</u>
WC. 12.1.26	Individual days and times TBC	6HB - Beanies
15 th January (every Thursday)	PM	Year 3 - Gwent Music - Samba
WC 19.1.26	Individual days and times TBC	6SL - Beanies
20 th January	9:15am-12:30pm	Year 6 at Bassaleg watching show – 39 Steps
20 th January	4pm	Parent Information Session – Resilience – All welcome!
22 nd January	PM	Year 2 - Suez Litter Pick
27 th January	3:20-4:15pm	Tuesday After School Clubs Start – Week 1
28 th January	AM	Nursery – Head over heels gymnastics in school
WC 2nd February - REARRANGED	Individual days and times TBC	Year 1 – Beanies – PLEASE NOTE DATE CHANGED TO WEEK COMMENCING 2ND March
3 rd February	PM	6HB – Circor Electronics Trip
3 rd February	3:20-4:15pm	Tuesday After School Clubs – Week 2
4 th February	PM	6SL – Circor Electronics Trip
10th February	9-10am	Parent Information Session – Helping your child with writing – All welcome!
10th February	3:20-4:15pm	Tuesday After School Clubs – Week 3
11th February	AM	Year 6 at Bassaleg watching Gym and Dance display
12th February	2pm	LRB2 – Beanies – Parents are invited in
12th February	2:30pm	Year 4 – Celebration of Learning Assembly – Parents invited in
13 th February		<u>INSET DAY</u>
WC 16 th February		<u>HALF TERM</u>

Dates For The Diary

<u>Date</u>	<u>Time</u>	<u>Event</u>
23 rd February	Return to school	
24 th February	3:20-4:15pm	Tuesday After School Club – Week 4
NEW DATE - WC 2 nd March	Individual days and times TBC	Year 1 – Beanies
2 nd March	FP – AM KS2 – PM	Whole school - Eisteddfod
3 rd March	9-10am	Parent Forum – Communication – All welcome!
3 rd March	3:20-4:15pm	Tuesday After School Club – Week 5
6 th March	All Day – Whole School	World Book Day - Pyjamas and favourite book
WC – 9 th March – REARRANGED	Individual days and times TBC	Reception- Beanies – PLEASE NOTE DATE CHANGED TO WEEK COMMENCING 23 rd March
W/C 9th March	All Week	5AC - Safe Cycling - Information to follow
10th March	All Day	Colourfoto and Year 6 Individual photo
10th March	3:20-4:15pm	Tuesday After School Club – Week 6
W/C 16th March	All Week	5SC - Safe Cycling - Information to follow
WC 16th March	Individual days and times TBC	Year 2 - Beanies
18th March	1:15pm-3pm	Careers Afternoon - More details to follow
19th March	3:20pm – 6:00pm	Parents Evening
20th March	All Day – Whole School	Comic Relief - Information to follow
NEW DATE - W/C 23 rd March	Individual days and times TBC	Reception – Beanies
23 rd March	AM	Year 6 - Bethesda - Easter Eggsplained
25 th March	3:20pm – 6:00pm	Parents Evening
25th March	All day	Year 4 Trip - Botanical Gardens - Information to follow
25th March	TBC	LRB1 - Spring picnic with parents/carers - TIME TBC
27 th March	9-10am	Parent Information Session – How to support your child with Maths – All welcome!
27 th March	1:30pm	LRB3 – Spring picnic and biscuit decorating – Parents/carers invited into school
WC 30 th March	Easter Holidays	

Term Dates

2025-26

Autumn term

Starts: Monday 1 September 2025

Half term: Monday 27 October 2025 to Friday 31 October 2025

Ends: Friday 19 December 2025

Spring term

Starts: Monday 5 January 2026

Half term: Monday 16 February 2026 to Friday 20 February 2026

Ends: Friday 27 March 2026

Summer term

Starts: Monday 13 April 2026

Half term: Monday 25 May 2026 to Friday 29 May 2026

Ends: Monday 20 July 2026

2026-27

Autumn term

Starts: Tuesday 1 September 2026

Half term: Monday 26 October 2026 to Friday 30 October 2026

Ends: Friday 18 December 2026

Spring term

Starts: Monday 4 January 2027

Half term: Monday 8 February 2027 to Friday 12 February 2027

Ends: Friday 19 March 2027

Summer term

Starts: Monday 5 April 2027

Half term: Monday 31 May 2027 to Friday 4 June 2027

Ends: Tuesday 20 July 2027

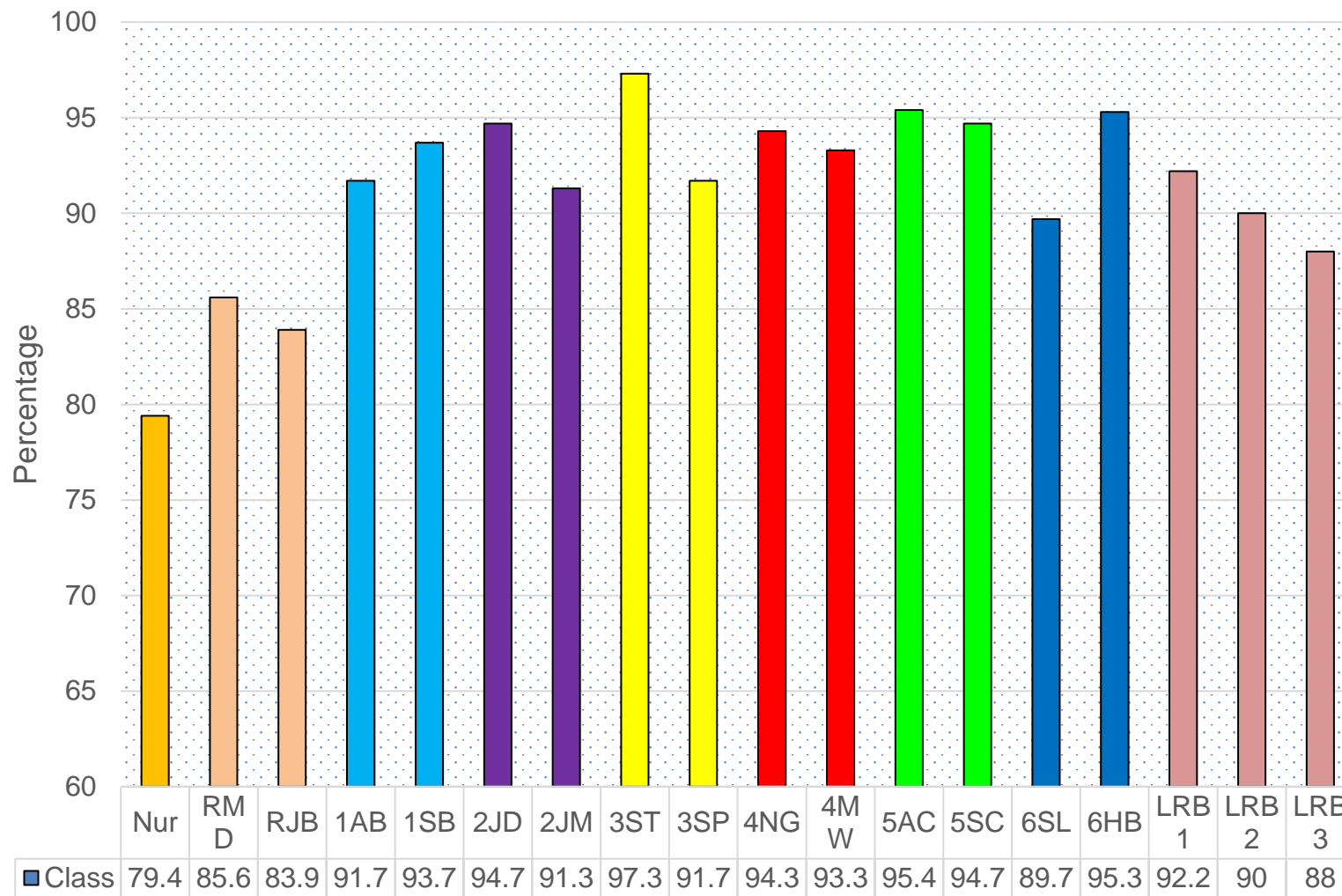
INSET Days – School is closed for children:

- Monday 1st September 2025
- Friday 21st November 2025
- Monday 24th November 2025
- Friday 13th February 2026
- Friday 17th July 2026
- Monday 20th July 2026



Attendance at Rogerstone

Last Week..



SCHOOL ATTENDANCE MATTERS

- 100%**
• not missing any lessons during term time.
Present for all lessons activities and social time.
- 95%**
• missing in excess of two weeks of education.
Absent from the classroom for up to three weeks and the loss of a significant amount of education.
- Under 92%**
• missing more than 3 weeks of education.
A serious loss of learning which is likely to have a detrimental effect on your child's achievement and life chances.

"Virtual and regular school attendance is an essential requirement for successful learning from the time a child starts school."

Well done to 3ST last week with 97.3% attendance!

Attendance target for 2025-2026 is 95%



Year Group Contacts

lrb@rogerstoneprimary.com

nur@rogerstoneprimary.com

rec@rogerstoneprimary.com

year1@rogerstoneprimary.com

year2@rogerstoneprimary.com

year3@rogerstoneprimary.com

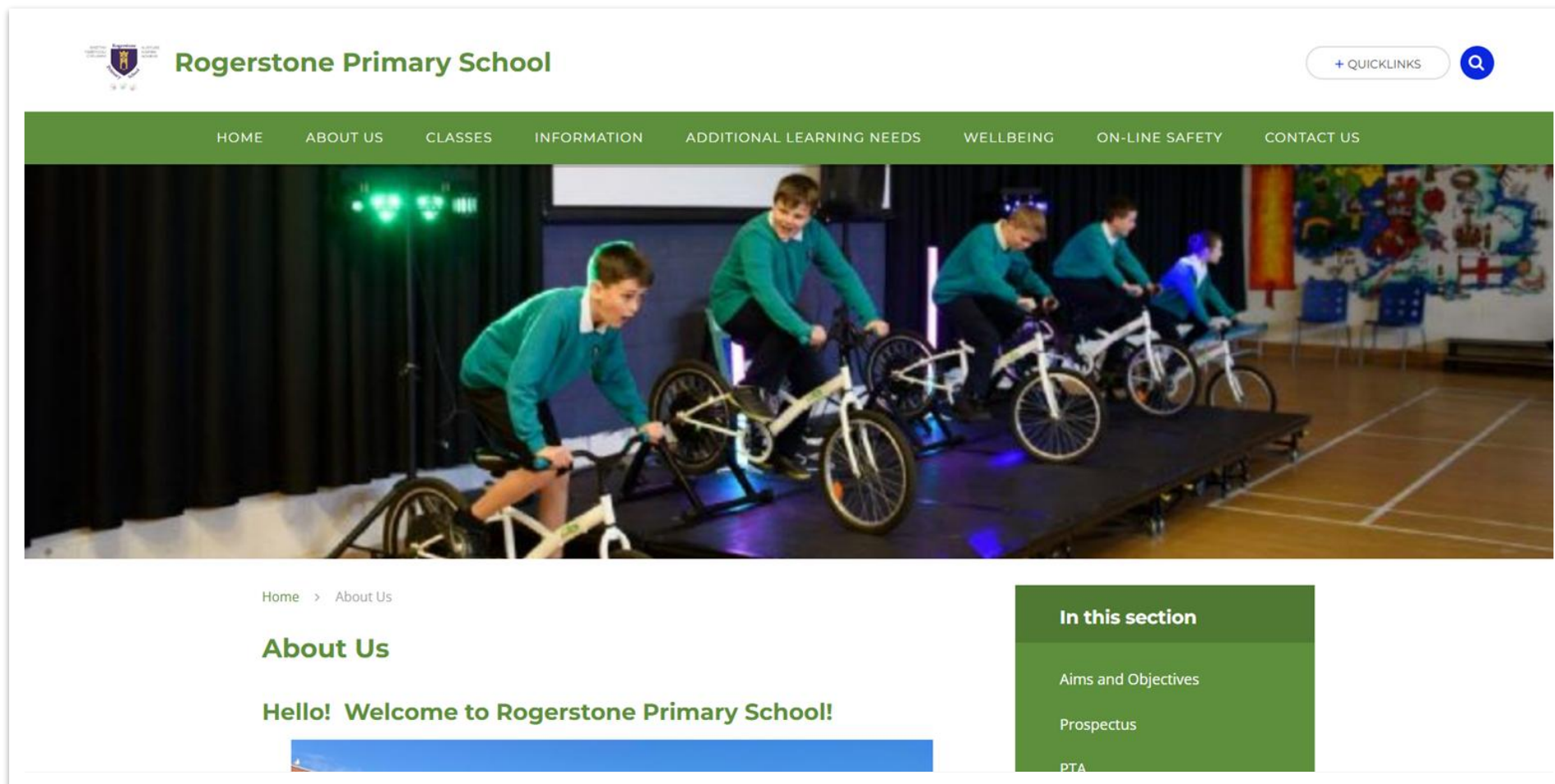
year4@rogerstoneprimary.com

year5@rogerstoneprimary.com

year6@rogerstoneprimary.com



For More Information Visit Our Website



rogerstoneprimary.com

